

MIDAM RGC00035

Fan-coil room unit



Communicative HMI designed for seamless integration with RFC017x1 fan-coil controllers. It is equipped with built-in temperature and humidity sensors, allowing it to continuously control environmental conditions. These values are clearly presented to the user via a large, easy-to-read, backlit LCD display, ensuring optimal visibility even in low-light conditions. Communication between both devices is established via the robust and widely-used Modbus protocol.

Application

- Fan-coil control in connection with RFC017x1
- Measurement of temperature and humidity
- Display of fan coil system status values
- Wired integration into SCADA control systems

Function

The room unit RGC00035 measures temperature and relative humidity. It allows to set the desired temperature setpoint and operating modes using the capacitive touch buttons. The values are transmitted through the modbus protocol to the RFC017x1 fan coil controller. White backlit display comes as a standard feature to this model. The unit can be delivered in white or black design version. This options need to be specified in the order. The room unit feature a native modbus map with the direct read and write functionality and is available in

a separate document (refer to RFC017x1 dedicated file). All settings and configuration are also stored in a modbus register, directly in the device. This device is fully compatible/interchangeable with the current RUC000XX (RGC000XX) fancoil room unit family.

SCADA system integration

The controller can be integrated via the RFC01711, resp. RFC01751 fancoil controller and its Modbus RTU (RS485) bus terminals. For direct integration, the RGC00035 room unit with direct Modbus RTU communication terminals is recommended.

Configuration

The device is configured using the manufacturer's tool or with a standard modbus tool, modifying the appropriate registers. The different operation modes and user access can be configured in this way. Modifications to the controller configuration can be made afterwards without the need for any special tools, for instance, setpoint limitation, disabling or enabling buttons, functions, etc.



MIDAM RGC00035

Fan-coil room unit



Technical data

Power supply	24 V AC ± 20%
Consumption	1W
Communication	RS485
Protocol	Modbus RTU, selectable speed 1200 ... 115200 bps
Mechanical and dimensions	88x88x45,5 mm Weight 0,14kgs Enclosure ABS, IP20, RAL9010, RAL9005 2 x DIP switch (1x USR mode, 1x INIT mode, 1x Bus End) 9x pin/screw terminal, recommended wire diameter 0.5 to 1.5 mm ²
Temperature measurement range	-20 to +55 °C, ± 0,5 °C
Humidity measuring range	10 to 90 % rH, ± 3% rH
Temperature setpoint	Configurable, ± 10 to ± 1 K
Display	Reflexive segmented LCD 65x650 mm, touch operated control icons
Ambient conditions	-5 to +45 °C, 5 % to 95 % rH (EN 60721-3-3 class 3K5)



IRC

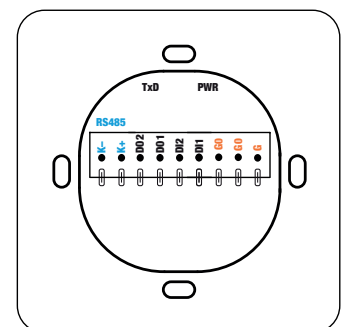
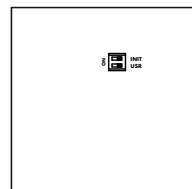
Terminals and DIP switches

Wall enclosure terminals (back side)

K-	Serial line RS485 - (To RFC017X1)
K+	Serial line RS485 + (To RFC017X1)
DO2	Not used.
DO1	Not used.
DI2	Not used.
DI1	Not used
G0	Power
G	Power

LCD enclosure (back side)

INIT	In ON position at power-up, configuration parameters are brought to defaults
USR	Not used.
BUS END	Switched via clamp located on the wall part front side .





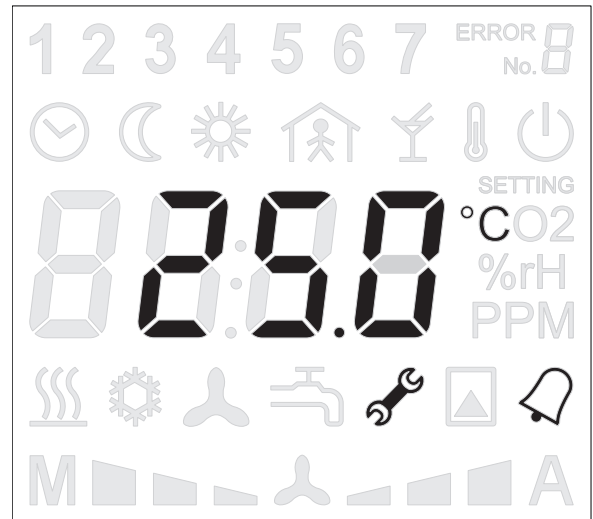
MIDAM RGC00035

Fan-coil room unit



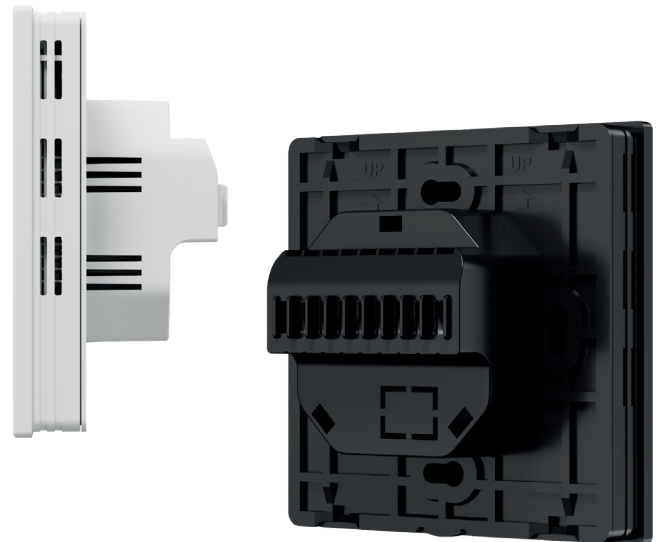
Display

The large LCD shows the current temperature, humidity and fancoil controller status using segment symbols, standard symbols for day and night mode, time programs and activated output. At the top of the display there are symbols indicating the day of the week. The bell and side wrench symbols indicate a communication error between the RGC00035 unit and RFC017x1. Check signal polarity (terminals K-, K+, bus termination, and correct wiring at the RFC017x1 (see RFC017x1 data sheet). Upon any intervention with buttons, display illuminates for defined time. All of the functions could be set from Modbus master.



Device installation/dismantle (flush mount)

Once the terminal part (back plate) has been wired and mounted onto the multifix flush box, slide the HMI part from the top to fit in the connecting terminals. The controller is secured in its position lock located in the bottom part of the device. To detach the HMI part from the terminal part, use thin tool in order to disengage the lock situated at the bottom of the HMI part. Then, pull the inclined LCD part cover carefully.



IRC

Changes in versions

06/2025	New datasheet version (v25/06).
---------	---------------------------------

Subject to technical changes and General Terms and Conditions. The images are illustrative.

